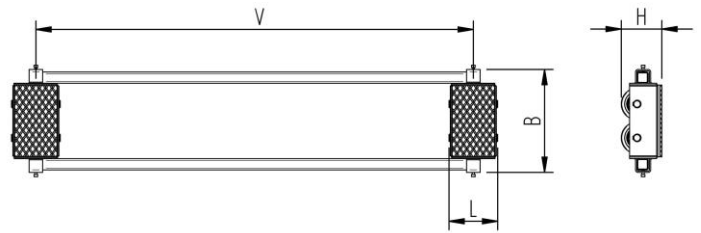
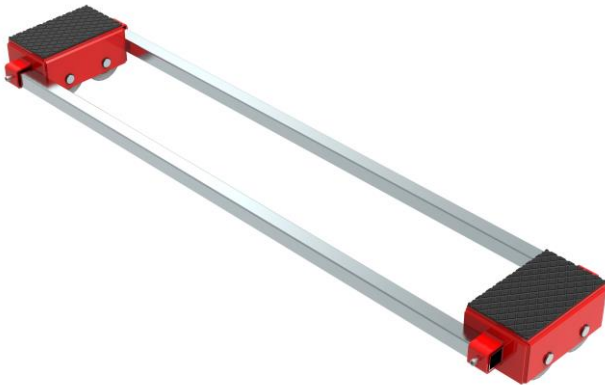


# Fact sheet **ECO-Skate** XN20S-B

Load moving system, rear, 3-/4- load points

# HTS



## Specification:

Heavy-duty load moving system for the professional indoor heavy load transport on clean, smooth and level floors. Design incl. alignment bars, anti-slip rubber pad and high-quality HTS nylon wheels, which are abrasion-resistant and non-marking and suitable for all smooth and level floors. In combination with an L or ROTO Skate system with the same installation height it forms a safe overall system with 3 load points. For a DUO or two ROTO skates, observe the operating instructions for 4-point supports.

## Technical data of load moving system:

# 10 200 55 20	318 x 188 mm	12,0 x 45 = 540 mm <sup>2</sup> ▼ 46,3 MPa
MAT NY, 80 Shore D	L x B x H 456 x 216 x 180 mm	43,2 cm <sup>2</sup>
2 x 10000 daN	V = 220 - 1940 mm	500 daN*
2 x 4	81 kg	400 daN*

## Equipped with the following wheel:

# 11 140 10 25R	12,0 x 45 = 540 mm <sup>2</sup> ▼ 46,3 MPa
MAT NY, 80 Shore D	2500 daN
Ø140x85 - Ø30 mm	V <sub>max</sub> = 2 km/h



**Please always observe the operating instructions, their safety instructions and local conditions!**

# Part No.	# Number of wheels	□ Load Area in mm	□ Area mm <sup>2</sup> of the roller surface pressure ▼ N / mm <sup>2</sup>	→ Traction* in daN, required force to move the load at a steady speed of 2 km/h under ideal conditions
MAT Wheel material layer, core: AL Aluminium, NY Nylon PU Polyurethane, ST Steel	□ Dimensions of wheel, inside ball bearing diameter mm	□ Dimensions in mm L x B x H	□ Loaded area per skate in cm <sup>2</sup>	
□ Carrying Capacity of load moving skate in daN at 2km/h max.	□ Weight kg	□ Steering bar length D for L, adjustability V for S and DUO skate systems	□ Starting resistance* in daN, required force to start moving, under ideal conditions	* Varies depending on the tolerances of the floor and ambient situation. All information without guarantee.