



GRUNIVERPAL S.r.l.  
Via Provinciale Verzuolo, 2,  
12026 PIASCO [CN] - Italy  
Phone: +39 0175 79301  
Fax: +39 0175 797948  
web: [www.gruniverpal.com](http://www.gruniverpal.com)

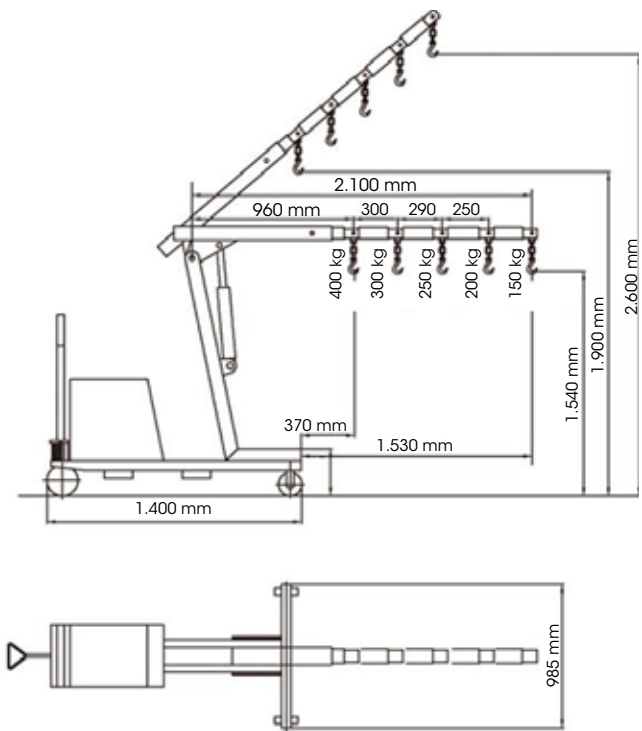
# CRANES & LIFTING EQUIPMENT

# JT-LINE CRANES





Tested 25% overload before delivery



## JT400\_TR WITH ROTATION

Maximum load capacity	400 kg
Standard max. hook's height from the ground	2.600 mm
Standard max. telescopic extension	1.530 mm
Capacity at standard max. telescopic extension	150 kg
Drive	Manual
Lifting	Electric
Telescoping	Manual
Rotation 270°	Manual
Dimensions - length	1.400 mm
Dimensions - width	985 mm
Dimensions - height	1.780 mm
Max. surmountable slope ( unloaded )	5%
Max. surmountable slope ( loaded )	3%
Front wheels	2 x Ø 200 mm
Rear driving wheel	2 x Ø 200 mm
Wheels material	Polyurethane
Total weight	660 Kg
Electric motor power	0,8 KW / 12 V
Hardened battery (standard)	80Ah / 12 V
Battery charger on board	110 / 240 V -50/60 Hz
Gel battery	•
Proportional control on board of all mouvements	•
Certification to standard 2006/42 CE	•
Drive hydraulic unit	-
Automatic braking system	-
Overloading safety system	-
Pressure safety valves on each movements	•
Safety emergency electric devices	•
Winch (lifting capacity on demand)	-
Possibility to do all movements with max. Load	•



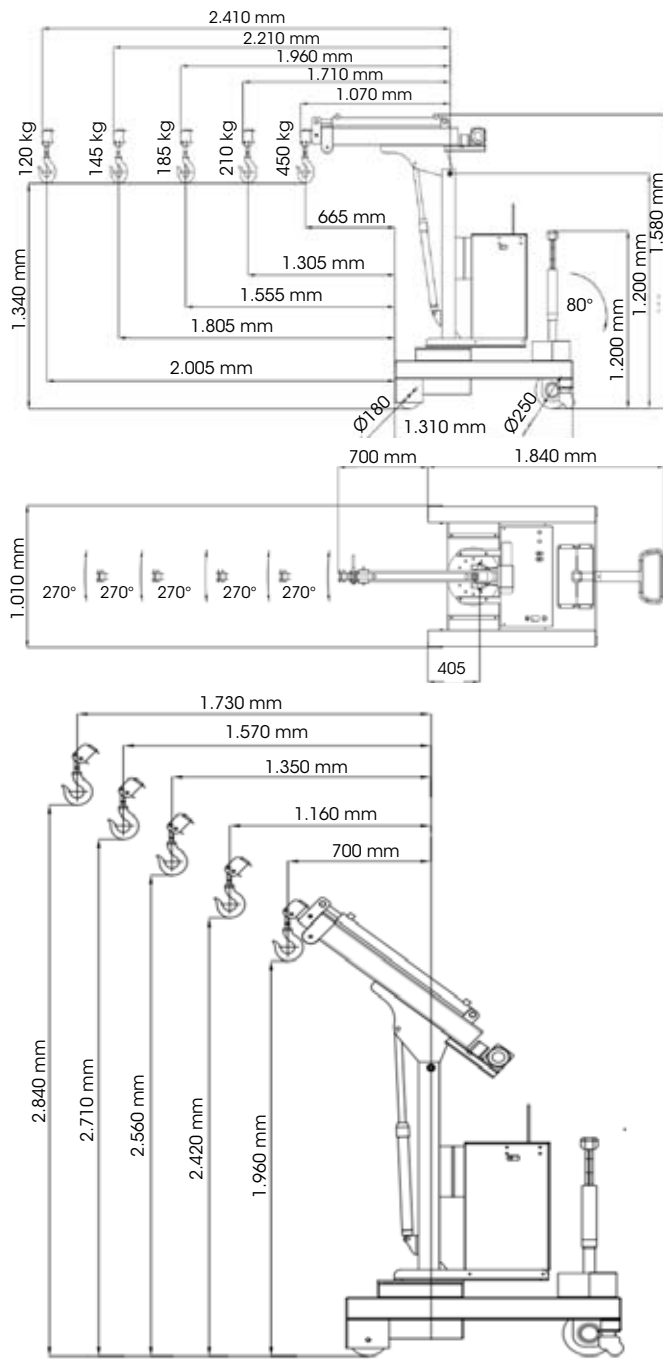
Unique operate handle, brake design, mobile and foldable







Tested 25% overload before delivery



## JT450\_TR WITH ROTATION

Maximum load capacity	450 kg
Standard max. hook's height from the ground	2.840 mm
Standard max. telescopic extension	2.005 mm
Capacity at standard max. telescopic extension	120 kg
Drive	Electric
Lifting	Electric
Telescoping	Electric
Rotation 270°	Electric
Dimensions - lenght	1.310 mm
Dimensions - width	1.010 mm
Dimensions - height	1.845 mm
Max. surmountable slope ( unloaded )	5%
Max. surmountable slope ( loaded )	3%
Front wheels	2 x Ø 180 mm
Rear driving wheel	1 x Ø 250 mm + 2 x Ø 60 mm
Wheels material	Polyurethane
Total weight	1.200 Kg
Electric motor power	2,2 KW / 24 V + 0,7 KW / 24 V
Hardened battery (standard)	80Ah / 24 V
Battery charger on board	110 / 240 V -50/60 Hz
Gel battery	•
Proportional control on board of all mouvements	•
Certification to standard 2006/42 CE	•
Drive hydraulic unit	•
Automatic braking system	•
Overloading safety system	•
Pressure safety valves on each movements	•
Safety emergency electric devices	•
Winch (lifting capacity on demand)	•
Possibility to do all movements with max. Load	•

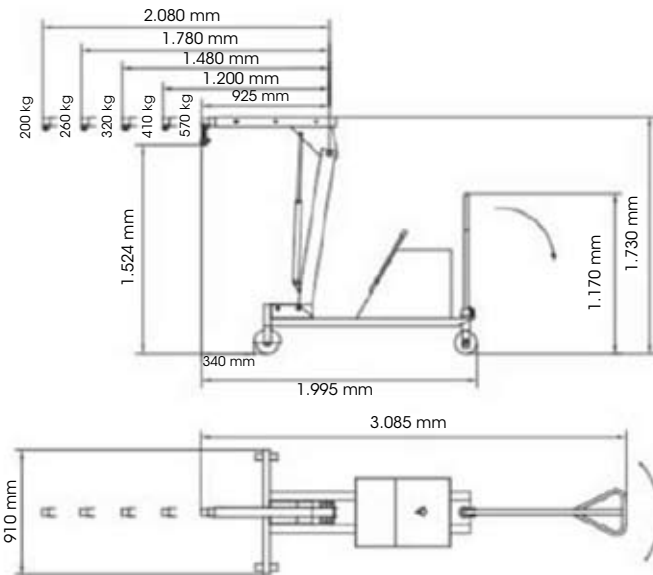
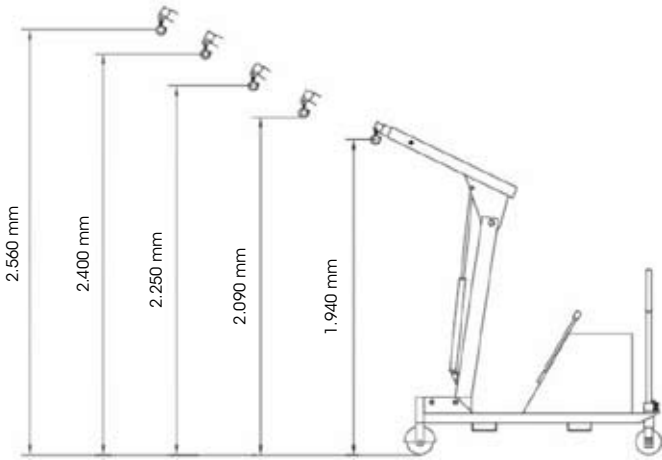


Unique operate handle, brake design, mobile and foldable





Tested 25% overload before delivery



## JT600 WITHOUT ROTATION

Maximum load capacity	600 kg
Standard max. hook's height from the ground	2.560 mm
Standard max. telescopic extension	1.520 mm
Capacity at standard max. telescopic extension	200 kg
Drive	Manual
Lifting	Electric
Telescoping	Manual
Rotation 270°	-
Dimensions - lenght	1.618 mm
Dimensions - width	910 mm
Dimensions - height	1.730 mm
Max. surmountable slope ( unloaded )	5%
Max. surmountable slope ( loaded )	3%
Front wheels	2 x Ø 200 mm
Rear driving wheel	2 x Ø 200 mm
Wheels material	Polyurethane
Total weight	590 Kg
Electric motor power	0,8 KW / 12 V
Hardened battery (standard)	80Ah / 12 V
Battery charger on board	110 / 240 V -50/60 Hz
Gel battery	•
Proportional control on board of all mouvements	•
Certification to standard 2006/42 CE	•
Drive hydraulic unit	-
Automatic braking system	-
Overloading safety system	-
Pressure safety valves on each movements	•
Safety emergency electric devices	•
Winch (lifting capacity on demand)	-
Possibility to do all movements with max. Load	•



Unique operate handle, brake design, mobile and foldable

