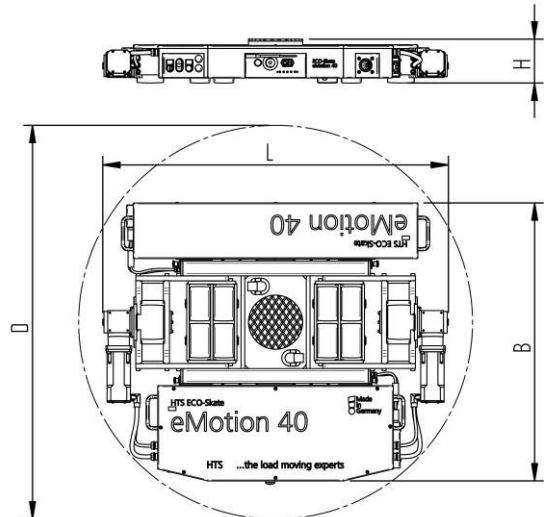


# Fact sheet **ECO-Skate eMotion 40**

emotion, radiocontrolled, battery powered

# HTS



## Specification:

eMotion heavy duty transport load moving system, battery powered and remote controlled for the professional internal heavy goods transport on clean and even floors. All movements are proportional and precisely controlled via remote control with a single joystick, incl. LiFePo4 battery, battery charger, turntable with anti-slip rubber pad and radio remote control. Equipped with high-quality HTS nylon wheels (load wheels) and specially manufactured polyurethane traction wheels, which are abrasion-resistant, non-marking and cut-resistant as well as suitable for all smooth and level floors. In combination with an S skate or two ROTO skates (the load capacity of the undercarriage must correspond to the tractive force of the drive unit) with the same installation height it forms a safe overall system with 3 load points.

## Technical data of load moving system:

|                                 |                                   |   |
|---------------------------------|-----------------------------------|---|
| # 10 200 51 10                  | Ø 220 mm                          | 20000 daN                                   |
| 300 kg                          | L x B x H<br>1399 x 1146 x 180 mm | 40000 daN                                   |
| 0,5 V <sub>max</sub> = 0,5 km/h | D = 1600 mm                       | 3 %   |
| 5 h / 8 h                       | 434/433 MHz                       | Friction of drive wheel / ground<br>> = 0,3 |

## Equipped with the following load wheels:

|                    |   |
|--------------------|---|
| # 11 140 10 25 R   | 12,0 x 45 = 540 mm <sup>2</sup><br>▼ 46,3 MPa |
| MAT NY, 80 Shore D | Ø140x85 - Ø30 mm                              |
| # 8                | 43,2 cm <sup>2</sup>                          |



**Please always observe the operating instructions, their safety instructions and local conditions!**

|  |  |                            |   |  |
|--|--|----------------------------|---|--|
| # Part No.   | # Number of wheels                                   | Load Area in mm            | Area mm <sup>2</sup> of the roller surface pressure ▼ N / mm <sup>2</sup> | Maximum trailing load in daN with two additional support points            |
| MAT Wheel material layer, core: AL Aluminium, NY Nylon PU Polyurethane, ST Steel | Dimensions of wheel, inside ball bearing diameter mm | Dimensions in mm L x B x H | Loaded area per skate in cm <sup>2</sup>                                  | Capacity / charging time with 8A charging current. Fast charger on request |
| capacity of the load moving skate in daN   | Weight kg  | Turning circle D in mm     | Trafficable slope in% under maximum load                                  | 429 MHz: Japan / 447 MHz: Korea / others on request                        |

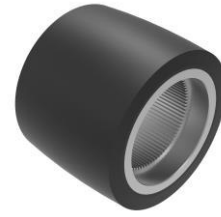
# Fact sheet **ECO-Skate** eMotion 40

emotion, radiocontrolled, battery powered



Equipped with the following drive wheels:

|     |              |  |   |
|-----|--------------|--|---|
| #   | 93 000 11 00 |  | 19,0 x 100 = 1900 mm <sup>2</sup><br>▼ 10,5 MPa |
| MAT | 93 Shore A   |  | Ø140x100 mm                                     |
|     | # 2          |  | 38 cm <sup>2</sup>                              |



Combination options:

|   |                           |                           |                       |
|---|---------------------------|---------------------------|-----------------------|
| 1 | eMotion 40 (10 200 51 10) | XN20S-B (10 200 55 20)    |                       |
|   |                           |                           |                       |
| 2 | eMotion 40 (10 200 51 10) | RFXN12 (10 120 03 41)     | RFXN12 (10 120 03 41) |
|   |                           |                           |                       |
| 3 | eMotion 40 (10 200 51 10) | eMotion 40 (10 200 51 10) | RFXN12 (10 120 03 41) |
|   |                           |                           |                       |

Please always observe the operating instructions, their safety instructions and local conditions!

|     |  |  |  |  |                            |  |   |  |  |
|-----|--|--|--|--|----------------------------|--|---|--|--|
| #   | Part No.   |  | Number of wheels                                     |  | Load Area in mm            |  | Area mm <sup>2</sup> of the roller surface pressure ▼ N / mm <sup>2</sup> |  | Maximum trailing load in daN with two additional support points            |
| MAT | Wheel material layer, core: AL Aluminium, NY Nylon PU Polyurethane, ST Steel |  | Dimensions of wheel, inside ball bearing diameter mm |  | Dimensions in mm L x B x H |  | Loaded area per skate in cm <sup>2</sup>                                  |  | Capacity / charging time with 8A charging current. Fast charger on request |
|     | capacity of the load moving skate in daN                                     |  | Weight kg  |  | Turning circle D in mm     |  | Trafficable slope in% under maximum load                                  |  | 429 MHz: Japan / 447 MHz: Korea / others on request                        |